

# RW/RWA/RWS

**SIMEX**  
HEAVY MADE EASY



simex.it



# WHEEL SAWS

## SELF-LEVELLING

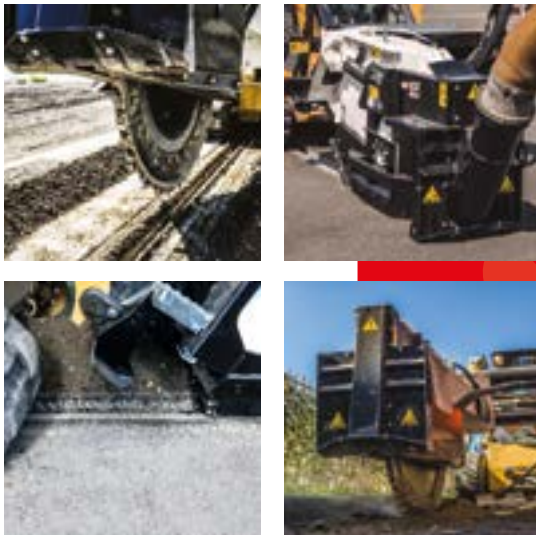
RWS 400  
RW 500  
RWA 500



Designed for skid steer mounting, Simex RW and RWA wheel saws provide different solutions for working on hard or compact surfaces such as asphalt, concrete and rock: cutting and narrow trenches, set-section trenches, mini- and micro-trenches for fiber optic cable installation. Full protection of the wheel at any working depth guarantees maximum safety of persons and property.

Self-leveling feature ensures constant trench depth and allows operator excellent visibility in any condition.

**SIMEX** **PERFORMER**  
• patent •



### ADVANTAGES

- Clean trench
- Constant trench depth
- Max. safety
- Excellent visibility for operator
- High cutting force
- Stability and no vibrations

- Utilities
- Quarries and mines
- Demolition
- Port and underwater works
- Construction and building
- Infrastructure
- Tunneling
- Agriculture and forestry
- Recycling
- Roadworks
- Trenching

- Mini-excavator
- Excavator
- Skid steer loader
- Front loader
- Backhoe

TECHNICAL DATA		RWS 400	RW 500	RWA 500
Trench width	mm inch	50 - 80 - 100 - 120 2 - 3 - 4 - 5	50 - 80 - 100 - 120 2 - 3 - 4 - 5	50 - 80 - 100 - 120 2 - 3 - 4 - 5
Trench depth	mm inch	250 - 400 10 - 16	250 - 500 10 - 20	250 - 500 10 - 20
Depth adjustment		Hydraulic		
Side shift		Hydraulic		
Operating weight (1)	kg lbs	1100 2420	1275 - 1340 2800 - 2950	1300 - 1400 2860 - 3080
Required oil flow	l/min gpm	90 - 160 24 - 43	100 - 160 27 - 43	100 - 160 27 - 43
Max. oil pressure	BAR psi	300 4350	300 4350	300 4350
Lateral tilt		●		●
Conveyor belt		□	□	□
Vacuum device		□	□	□
Steering system		●		

● Standard □ On request

(1) User is responsible for ensuring that the characteristics of the prime mover suit the weight and specifications of the attachment

Simex does not accept responsibility or liability for the information provided. Technical modifications may vary without prior notice.